

**If you have concerns about your son or daughter:**

Please get in contact with us if you have concerns over your son or daughter's progress. (see contact information earlier in leaflet)

**If your son or daughter is already on our SEND register:**

Staff from the SEND department are available at all parents' evenings during the year.

In addition we run a rolling programme of termly meetings for parents of students who are on our SEND register.

For those students who have a statement of SEND or an EHCP, formal annual reviews will also be held in school.

All students with additional needs are carefully monitored at all stages of their time at CWLC.

Please visit the school website and follow the link for the school's Local Offer for more detailed information on our SEND provision:

<http://www.christopherwhitehead.worcs.sch.uk/local-offer-for-additional-needs/>

Further information about the Worcestershire Local Offer can be found at the following link:

<https://www.worcestershire.gov.uk/sendlocaloffer>

For more information on national perspective the following document may also be useful:

*Parents Guide to the New SEND Code of Practice 2014*

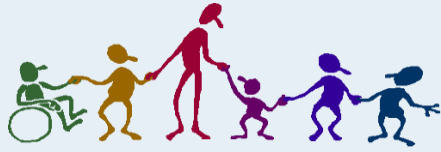
Available from:  
[www.gov.uk/government/publications](http://www.gov.uk/government/publications)



**A Parents' Guide to Special Educational Needs at Christopher Whitehead Language College**



*In pursuit of excellence*



Headteacher: Mr N Morris  
 Inclusion Manager:  
 Mrs D Evans  
 d.evans@cwlc.email  
 SENCO: Mrs Z Taylor  
 z.taylor@cwlc.email  
 LSC Manager: Mrs G Forde  
 Tel: 01905 423906 ext: 231

At CWLC it is our philosophy to develop and maximise the full potential of every individual. Our general principles are:

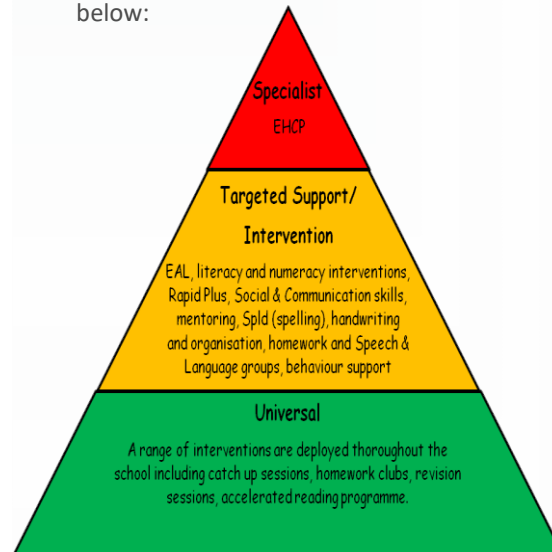
- To ensure we meet the Special Educational Needs (SEN) of every student and that they have access to a broad, balanced education.
- Early identification and monitoring of students with Special Educational Needs. Where possible, these students will be educated alongside their peers.
- Parents have a vital role to play in supporting their child's education and that the views of the student should also be sought.

## Definition of Special Educational Needs (SEN)

Young people have a Special Educational Need if they have a learning difficulty which calls for special educational provision to be made for them. This will be if the child:

- Has significantly greater difficulty in learning than the majority of children the same age; or
- Has a disability which prevents or hinders them from making use of educational facilities of a kind generally provided for children of their age in schools within the area of the Local Authority.

At CWLC we follow a model of tiered provision as outlined in the diagram below:



## Four Areas of Special Educational Need

- Communication and interaction (e.g. speech and language difficulties/Autistic spectrum disorders)
- Cognition and learning - (general or specific learning difficulties)
- Social, emotional and mental health
- Sensory and/or physical (hearing impairment, visual impairment, physical & medical difficulties)

At CWLC we have a dedicated team of experienced staff who work closely together and across the school in all departments to meet the needs of all students. We are committed to working with a range of professionals where necessary in order to deliver the highest quality of provision for all students. Special Educational needs provision aims to provide students with the tools to overcome or minimise barriers to their learning. Working in partnership with parents is a vital part of our provision.